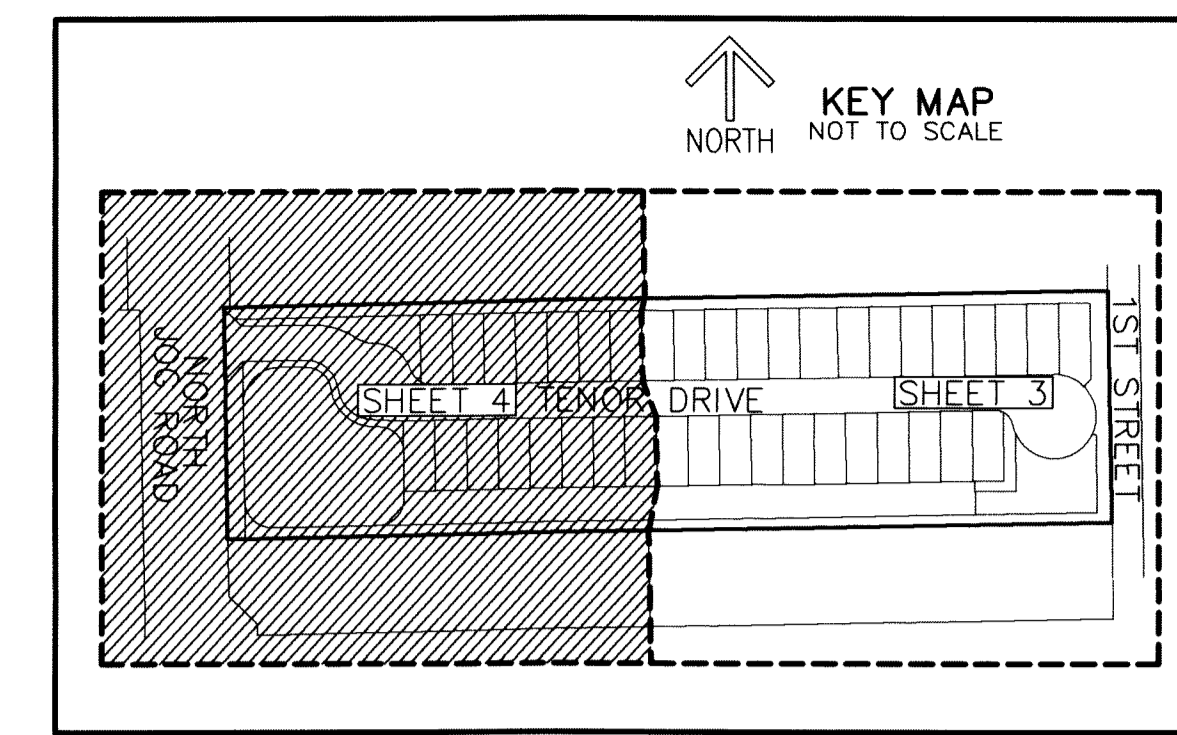


THIS INSTRUMENT PREPARED BY
 DAVID P. LINDLEY
 OF
CAULFIELD and WHEELER, INC.
 SURVEYORS - ENGINEERS - PLANNERS
 7900 GLADES ROAD, SUITE 100
 BOCA RATON, FLORIDA 33434 - (561)392-1991
 CERTIFICATE OF AUTHORIZATION NO. LB3591

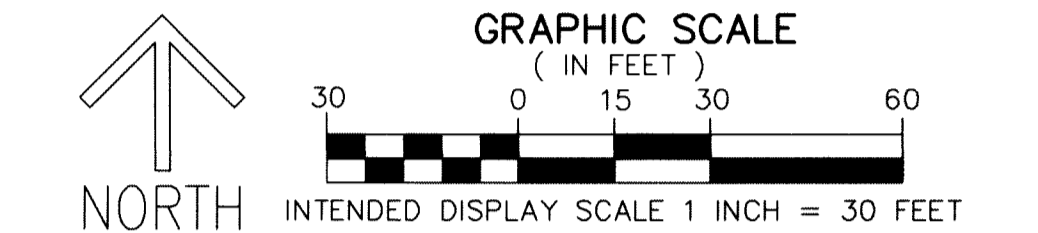
SYMPHONY PLACE

BEING A REPLAT OF A PORTION OF TRACTS 57 AND 58, BLOCK 5,
 THE PALM BEACH FARMS CO PLAT NO. 3,
 AS RECORDED IN PLAT BOOK 2, PAGES 45 THROUGH 54 OF THE PUBLIC RECORDS
 OF PALM BEACH COUNTY, FLORIDA,
 LYING IN SECTION 34, TOWNSHIP 43 SOUTH, RANGE 42 EAST,
 PALM BEACH COUNTY, FLORIDA



22

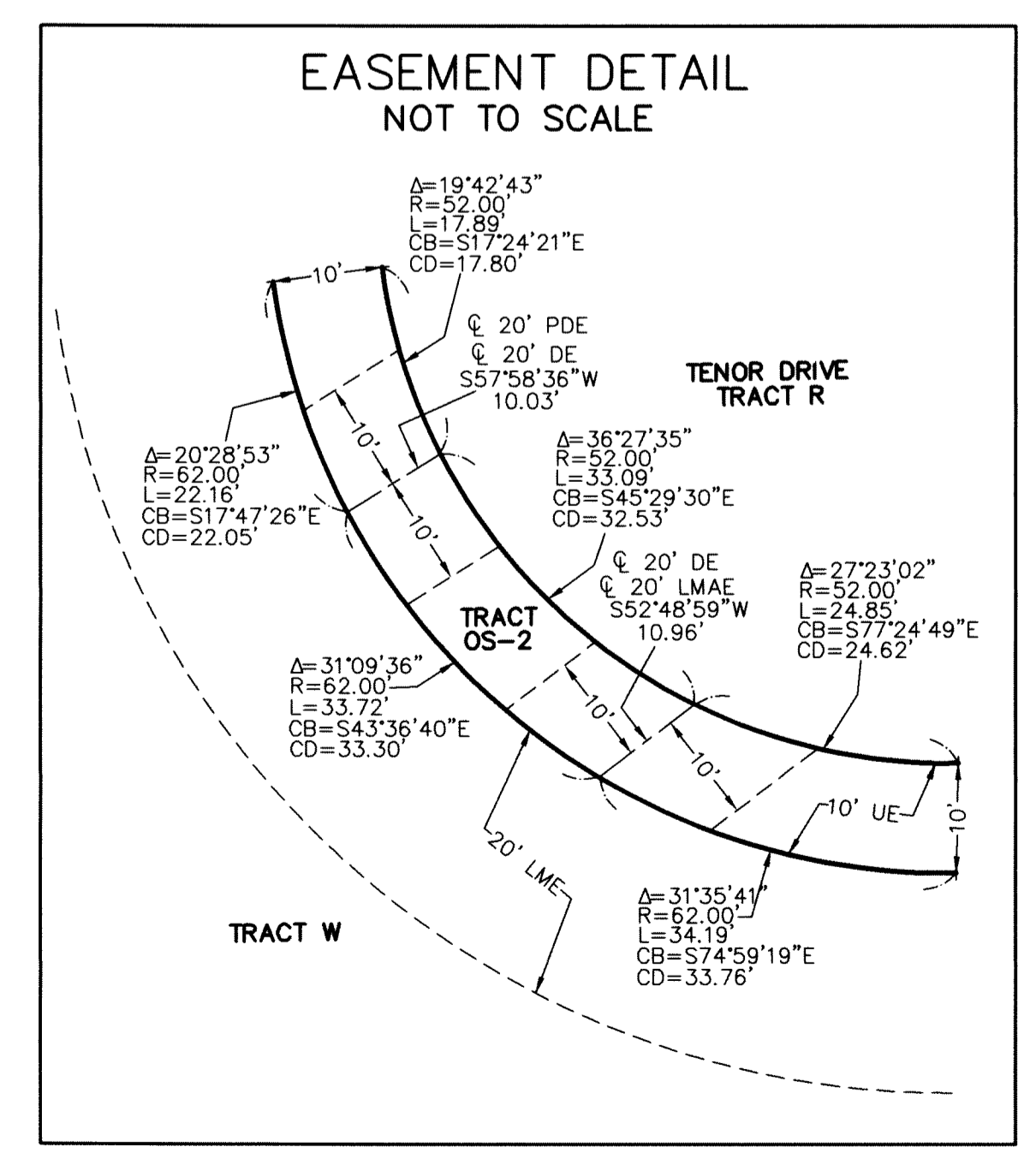
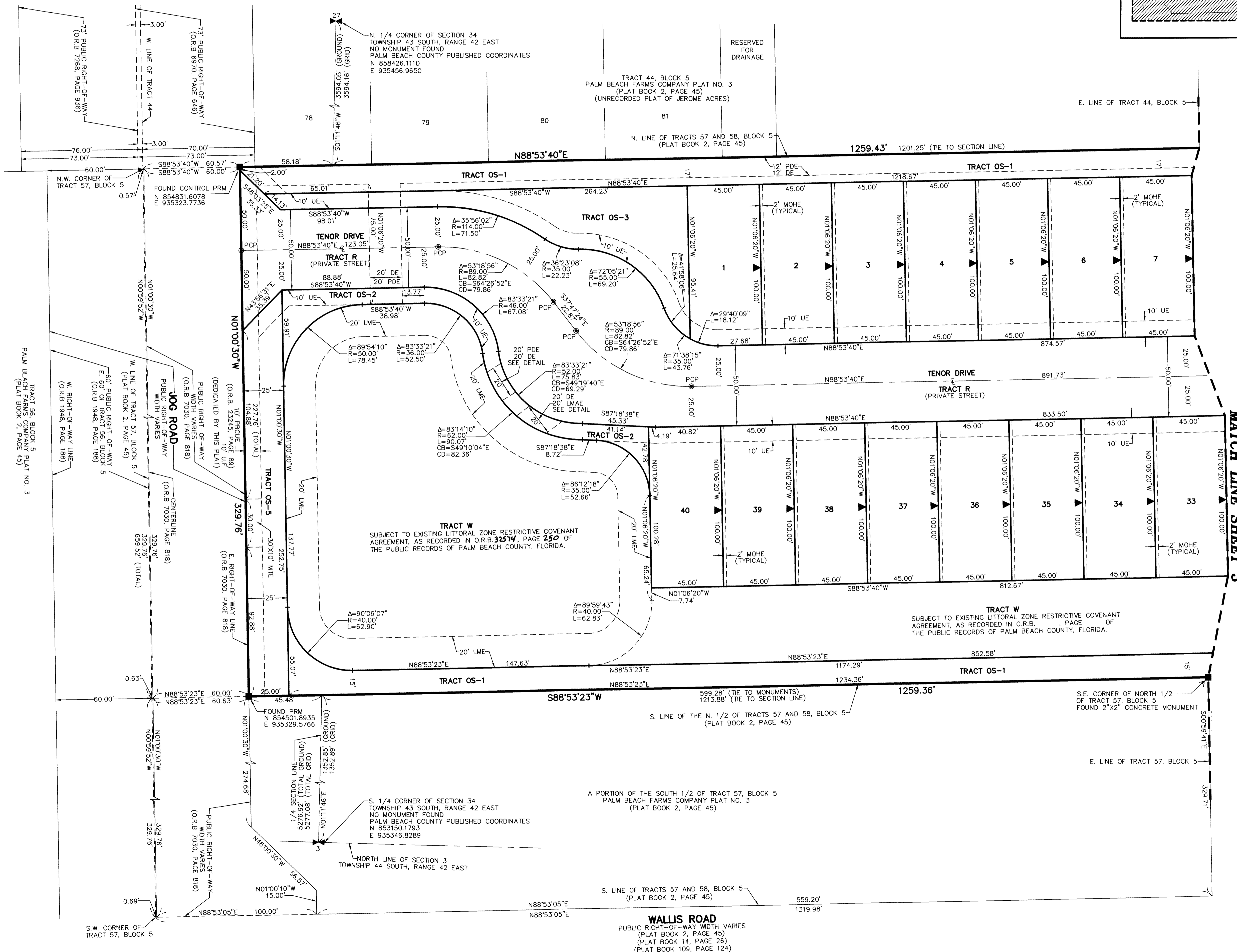
SHEET 4 OF 4



NOTES
 COORDINATES, BEARINGS AND DISTANCES
 COORDINATES SHOWN ARE GRID
 DATUM = NAD 83 (1990 ADJUSTMENT)
 ZONE = FLORIDA EAST
 LINEAR UNIT = US SURVEY FEET
 COORDINATE SYSTEM 1983 STATE PLANE
 TRANSVERSE MERCATOR PROJECTION
 ALL DISTANCES ARE GROUND UNLESS OTHERWISE NOTED
 SCALE FACTOR = 1.00003056
 GROUND DISTANCE X SCALE FACTOR = GRID DISTANCE
 BEARINGS AS SHOWN HEREON ARE GRID DATUM,
 NAD 83 (1990 ADJUSTMENT), FLORIDA EAST ZONE.

LEGEND/ABBREVIATIONS

- CL - CENTERLINE
- Δ - DELTA (CENTRAL ANGLE)
- CB - CHORD BEARING
- CD - CHORD DISTANCE
- DE - DRAINAGE EASEMENT
- E - EASTING (WHEN USED WITH COORDINATES)
- L - ARC LENGTH
- LB - LICENSED BUSINESS
- LMAE - LAKE MAINTENANCE ACCESS EASEMENT
- LME - LAKE MAINTENANCE EASEMENT
- LSF - LIFT STATION EASEMENT
- N - NORTHING (WHEN USED WITH COORDINATES)
- MOHE - MAINTENANCE AND OVERHANG EASEMENT
- MTE - MASS TRANSIT EASEMENT
- O.R.B. - OFFICIAL RECORD BOOK
- PBCUE - PALM BEACH COUNTY UTILITY EASEMENT
- PDE - PUBLIC DRAINAGE EASEMENT
- PT - POINT OF TANGENCY
- PNT - POINT OF NON-TANGENCY
- R - RADIUS
- UE - UTILITY EASEMENT
- ◀ - INDICATES "ZERO" SIDE OF LOT LINE
- PRM - DENOTES PERMANENT REFERENCE MONUMENT
 4" x 4" x 24" CONCRETE MONUMENT WITH
 ALUMINUM DISK STAMPED "C&W PRM LB3591"
- PCP - DENOTES PERMANENT CONTROL POINT
- △ - DENOTES HORIZONTAL CONTROL POINT



MATCH LINE SHEET 3